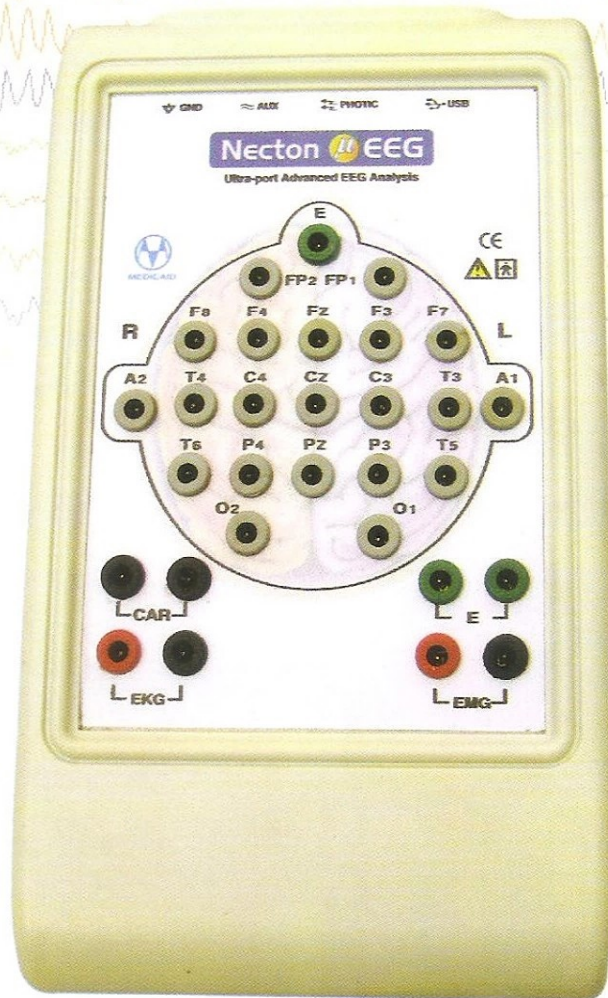


Necton μ EEG

Ultra-port Advanced EEG Analysis

Directly connect to USB port, no external power supply required



Features

- Easy laptop connectivity.
- Ideally suitable in ICU's.
- In-built word processor for reporting.
- Brain Mapping.
- Optically Isolated.
- Auto Spike Detection.
- Operating system Windows Based.
- Comparison of three montages simultaneously.
- Complete EEG transfer on CD & playback without additional software.
- Upgradable to Video EEG.



MEDICAID

CE

Serving Health..... Through Technology

Features

Online, Offline reformatting of HLF, LLF, Sensitivity and number of Channels

Split Screen facility to compare three montages simultaneously

Montage diagram & Photic Marks on Printout

Automatic Hyperventilation Timings

Automatic AC Impedance check

Brain Map of frequency, Spectral and voltage with Left/Right view

Programmable Colour of each Channels

Users Programmable Photic Sequences & Events

Ultra fast automatic paging facility for efficient analysis

Facility to zoom required portion of data

Facility to write comments during review

Facility to send data by e-mail

Search bar facility to access to any part of data

User defined protocol for acquisition

Computerised calculation of Amplitude & Time

Selected EEG data extraction

Simultaneous acquisition and Analysis facility

Facility to mark pages in review and print

Technical Specification

- Channel : 24-32
- A/D Conversion : 16 bit
- Sampling Rate : 1024 Hz
- Sensitivity : 1 to 1000 μ v
- Low Pass Filter : 0.1, 0.3, 1 & 5 Hz
- High Pass Filter : 15, 35, 70, 100 Hz
- Notch Filter : 50/60 Hz on/off
- Sweep Speed : 7.5, 15, 30 & 60 mm/sec
- Input Impedance : > 10 M ohm
- CMRR : > 100 db
- Noise Level : Less than 1 μ v
- Flash Rate : 1 to 30 Hz Software Controlled
- Dimension : L- 6.75 x W- 4.00 x H- 1.25 Inch
- Weight : 240 Gram

Laptop, Computer Hardware (Optional)

- CPU : i3 Processor, 2 GB RAM,
500 GB HDD, DVD Writer, OS Window
- Printer : Any Inkjet Printer supporting window
- Optional : Laser Printer

Standard Accessories

- Disc Electrodes - 50 nos.
- EEG Paste - 2 Jars.
- Ground Wire - 1 No.
- Interface Cable - 1 No.
- Photic Flash - 1 No.
- Installation CD - 1 No.
- Carry Bag - 1 No.



Photic Flash



Installation CD



Conductive EEG Paste



Gold Plated EEG Electrodes



Interface Cable

Optional

High Resolution Camera for Video EEG

MARKETED BY
R.S. Enterprises



Head Office
R.S. Enterprises
Mayfair Crown B-202
Zila Parishad Road
Jyoti Nagar, Siliguri
734001

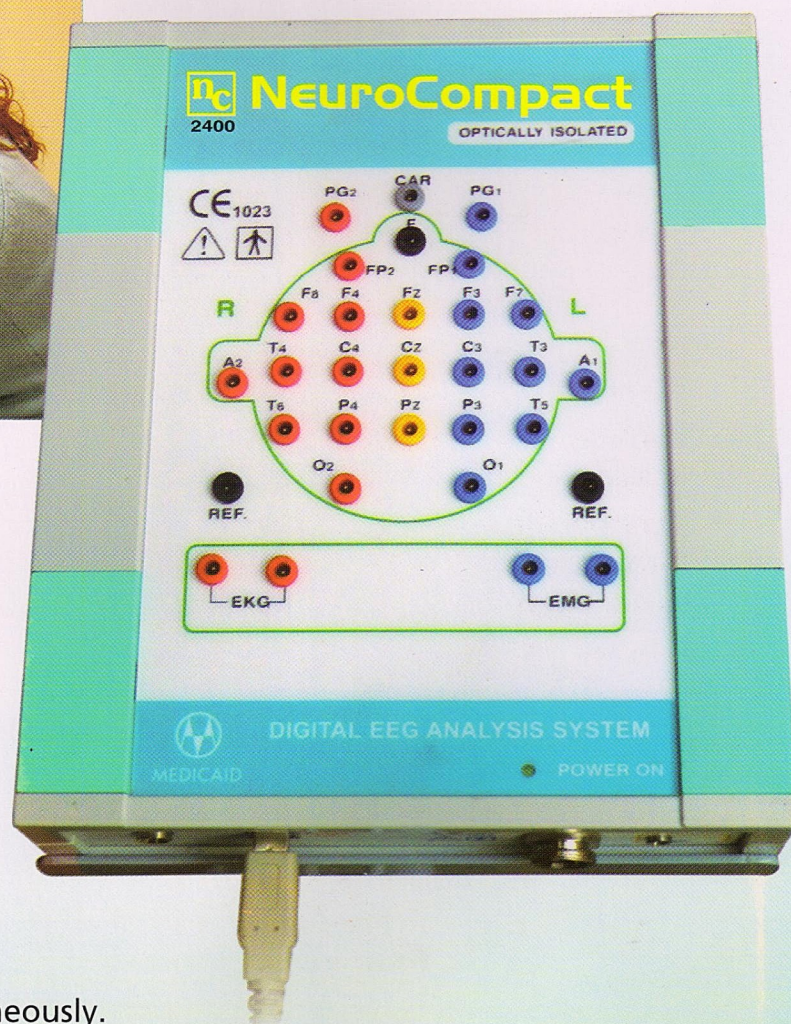
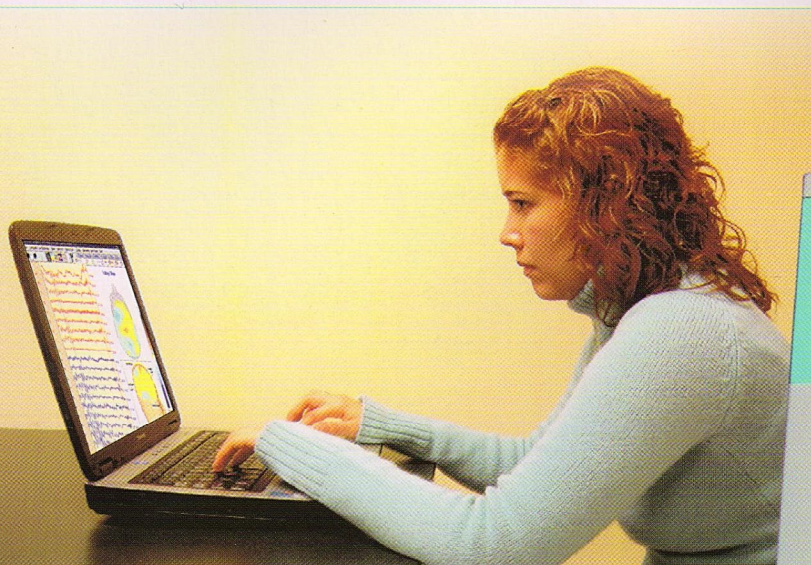
Kolkata Branch
R.S. Enterprises
Upohor Complex
C-2/614, Chakgaria
Kolkata - 94

Guwahati Branch
R.S. Enterprises
3rd Floor,
Above Old SBI Building
Ulubari, Guwahati
781007

NeuroCompact

Truly Portable Digital EEG

Directly connect to USB port, no external power supply required



Features

- Easy laptop connectivity.
- Ideally suitable in ICU's.
- In-built word processor for reporting.
- Brain Mapping.
- Optically Isolated.
- Auto Spike Detection.
- Operating system Windows XP.
- Comparison of three montages simultaneously.
- Complete EEG transfer on CD & playback without additional software.
- Upgradable to Video EEG.



An ISO 13485 : 2003 Company

CE
1023

NeuroCompact is the consistent further development of our paperless digital EEG device and represents a new generation of our digital system based on Windows XP.

Technical Specification

- Max. no. of Display Channels
 - NC - 2400 : 24 Channels
 - NC - 3200 : 32 Channels
- A/D Conversion : 16 bit
- Sampling Rate : 1024 Hz
- Sensitivity : 1 to 1000 μ v
- Low Pass Filter : 0.1, 0.3, 1 & 5 Hz
- High Pass Filter : 15, 35, 70, 100 Hz
- Notch Filter : 50/60 Hz on/off
- Sweep Speed : 7.5, 15, 30 & 60 mm/sec
- Input Impedance : > 10 M ohm
- CMRR : > 100 db
- Noise Level : Less than 1 μ v
- Flash Rate : 1 to 30 Hz Software Controlled
- Dimension : 195 x 165 x 50 mm
- Weight : 650 gms. (without laptop)

Standard Accessories

- Disc Electrodes - 50 nos.
- EEG Paste - 2 Jars.
- Ground Wire - 1 No.
- Interface Cable - 1 No.
- Photic Flash - 1 No.
- Installation CD - 1 No.
- Carry Bag - 1 No.



Photic Flash



Installation CD



EEG Paste



EEG Electrodes



Interface Cable

Features

- Online, Offline reformatting of HLF, LLF, Sensitivity and number of Channels
- Split Screen facility to compare three montages simultaneously
- Montage diagram & Photic Marks on Printout
- Automatic Hyperventilation Timings
- Automatic AC Impedance check
- Brain Map of frequency, Spectral and voltage with Left/Right view
- Programmable Colour of each Channels
- Users Programmable Photic Sequences & Events
- Ultra fast automatic paging facility for efficient analysis
- Facility to zoom required portion of data
- Facility to write comments during review
- Facility to send data by e-mail
- Search bar facility to access to any part of data
- User defined protocol for acquisition
- Computerised calculation of Amplitude & Time
- Selected EEG data extraction
- Simultaneous acquisition and Analysis facility
- Facility to mark pages in review and print

Computer Hardware (Optional)

- Computer : Core 2 Duo 2.93 GHz, 2 GB RAM
: 350 GB HDD or better
DVD Writer, Keyboard, Mouse
- Monitor : 17" Colour Supporting 1024x768 mode
- Printer : Any Inkjet/Laser printer supporting windows.

Optional

High Resolution Camera for Video EEG
Model : NC-2400 V, NC-3200 V

MARKETED BY
R.S. Enterprises



Head Office
R.S. Enterprises
Mayfair Crown B-202
Zila Parishad Road
Jyoti Nagar, Siliguri
734001

Kolkata Branch
R.S. Enterprises
Upohor Complex
C-2/614, Chakgaria
Kolkata - 94

Guwahati Branch
R.S. Enterprises
3rd Floor,
Above Old SBI Building
Ulubari, Guwahati
781007

www.rsenterprisesindia.co.in
E-mail: rsenterprises27@gmail.com
Phone: 98323632661 / 9800685887 / 9474878436

MANUFACTURED BY
Medicaid Systems



Neuromax

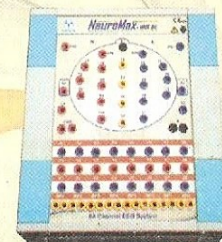
64 Channel window based Digital Video EEG and Long Term Monitoring Systems



*Superior Performance..
Favourable Price.*

Salient Features

- ♦ Facility to record/service upto 64 channels with montage bar (48 EEG, 8 Bipolar 2 EKG, 6 DC channels)
- ♦ USB interface, no external power or battery required.
- ♦ Brain mapping with multiple options.
- ♦ Online/Offline split video
- ♦ Dual monitor option for video
- ♦ Various options for EEG scrolling
- ♦ Highly Synchronized EEG with audio & video frame rate of 30 frames/sec.
- ♦ Resolution independent user interface.
- ♦ Coherence, FFT Graph and tabular data.
- ♦ Simultaneous Analysis & Acquisition of EEG data.
- ♦ Facility to mark event and write comment in analysis mode.
- ♦ Complete EEG data transfer from CD/DVD hard disc.
- ♦ Easy connectivity with Laptop/Desktop.
- ♦ Online impedance check with displays of numeric values of all electrodes.
- ♦ Online/offline reformatting of filters, low filters, sensitivity and sweep on channels.
- ♦ Use define photic stimulate protocols.
- ♦ Advanced graphic brain mapping with Spectral Array (CSA) & Density Spectral Array (DSA).
- ♦ Split screen facility to study any event/montage carefully during acquisition
- ♦ Auto backup of patient data for easy recovery
- ♦ Long distance modular amplifier design with flexibility and reliability.
- ♦ Remote control video tracking device.
- ♦ Day/night digital video canvas with high resolution zoom facility.
- ♦ Simultaneous analysis and recording.





Neuromax

The one system that does it all! Starting with complete features of a 64-channel windows based video EEG system provides additional benefits of Spike Detection, useful data exchange networks, auto recording start/stop, advanced yet easy and flexible review... and much more.

Technical Specification

No. of display channel	: 64 Channel
A/D Conversion	: 16 bit
Sensitivity	: (1, 2, 5, 7, 10, 15, 20, 30) mm/50mv & user definable
Low Filter	: 0.1, 0.3, 1, 5 Hz & user definable
High Filter	: 15, 30, 70, 100 Hz & user definable
Notch Filter	: 50/60 Hz on/off
Sweep Speed	: 7.5, 15, 30 & 60 mm/sec.
Input Impedance	: >20m ohm
CMRR	: >100 db
Noise level	: <Less than 1µv
Flash Rate	: 1 to 30 Hz
Power Supply	: 220V± 10% 50 Hz

Standard Accessories

Disc Electrodes (Gold Plated)	: 50 Nos.
EEG Paste	: 2 Jars.
Ground Wire	: 1 No.
USB Interface cable	: 1 No.
Photoc Flash	: 1 No.
Paper Rim (A4 Size)	: 1 No.
Coloured Camera	: 1 No.
Electrode Board	: 1 No.
EEG Software backup CD	: 1 No.
EEG Trolley Optional	: 1 No.

Computer Hardware

Core to Duo, 1 GB RAM, 360 GB Hard Disc.
17" LCD TFT Colour Monitor, Key Board, Mouse
Laser Printer/Inkjet Printer optional

MARKETED BY
R.S. Enterprises



Head Office
R.S. Enterprises
Mayfair Crown B-202
Zila Parishad Road
Jyoti Nagar, Siliguri
734001

Kolkata Branch
R.S. Enterprises
Uphor Complex
C-2/614, Chakgaria
Kolkata - 94

Guwahati Branch
R.S. Enterprises
3rd Floor,
Above Old SBI Building
Ulubari, Guwahati
781007

www.rsenterprisesindia.co.in
E-mail: rsenterprises27@gmail.com
Phone: 98323632661 / 9800685887 / 9474878436

MANUFACTURED BY
Medicaid Systems

Serving health...through technology